

T estpassport덤프



Testpassport 는 고객님의게 1년무료 업데이트 서비스를 제공해드립니다

Testpassport 고품질 인증덤프
<http://www.testpassport.kr>

Exam : **300-420**

Title : Designing Cisco Enterprise
Networks (ENSLD)

Version : DEMO

1.DRAG DROP

Drag and drop the characteristics from the left onto the Yang model they describe on the right.

- independent of the underlying operating system
- specific to the underlying operating system
- vendor neutral
- provided by the vendor for device management

Open Model

Native Model

Answer:

- independent of the underlying operating system
- specific to the underlying operating system
- vendor neutral
- provided by the vendor for device management

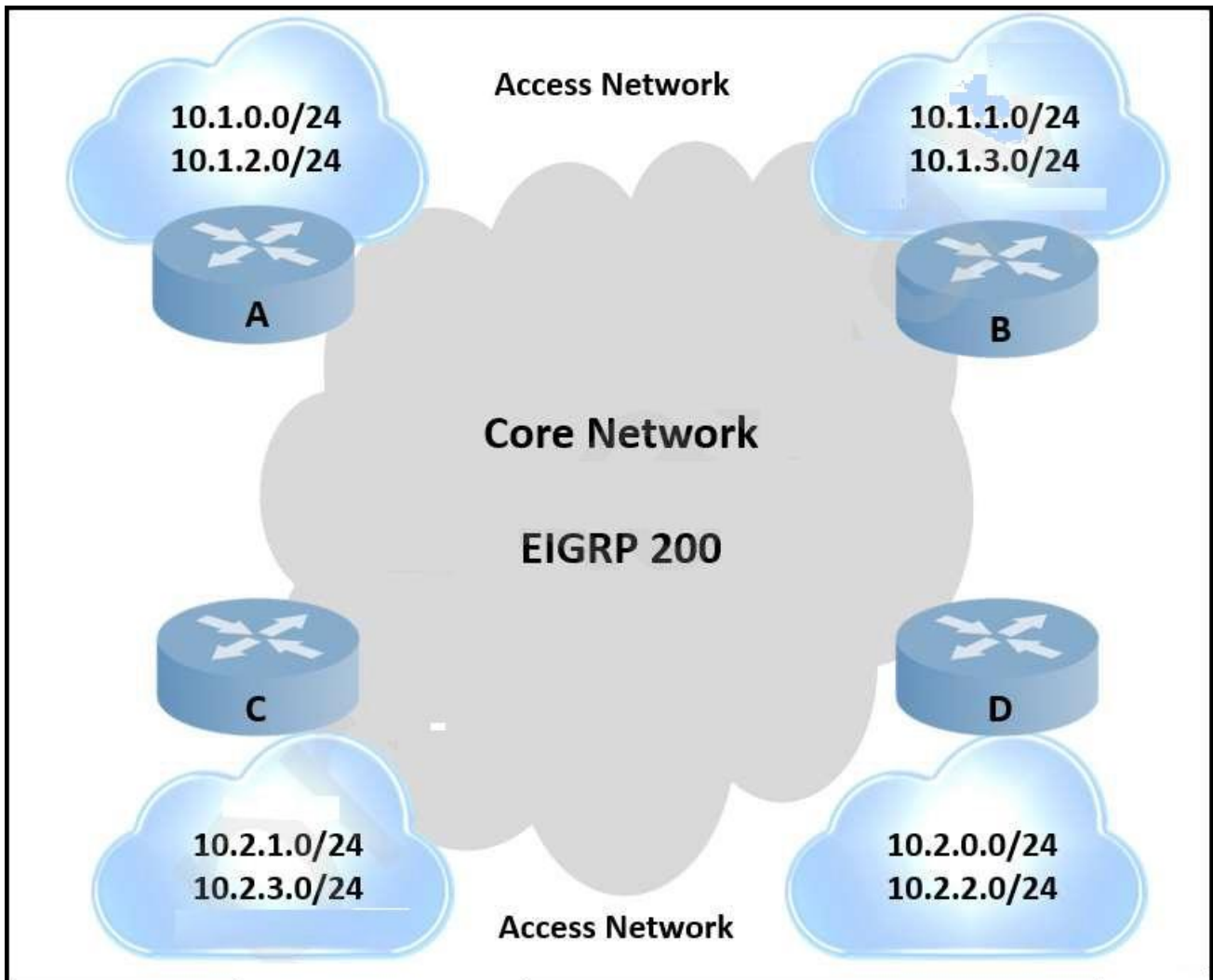
Open Model

- independent of the underlying operating system
- vendor neutral

Native Model

- specific to the underlying operating system
- provided by the vendor for device management

2.Refer to the exhibit.



An engineer is designing a routing solution for a customer. The design must ensure that a failure of network 10.1.0.0/24, 10.1.2.0/24, 10.2.1.0/24, or 10.2.3.0/24 does not impact the core. It also requires fast convergence time during any link failover in the core or access networks.

Which solution must the engineer select?

- A. Add aggregation layer between core and access networks.
- B. Enable graceful restart on routers A and C.
- C. Enable FRR for the connected networks of routers A and C.
- D. Enable summarization on routers A and C.

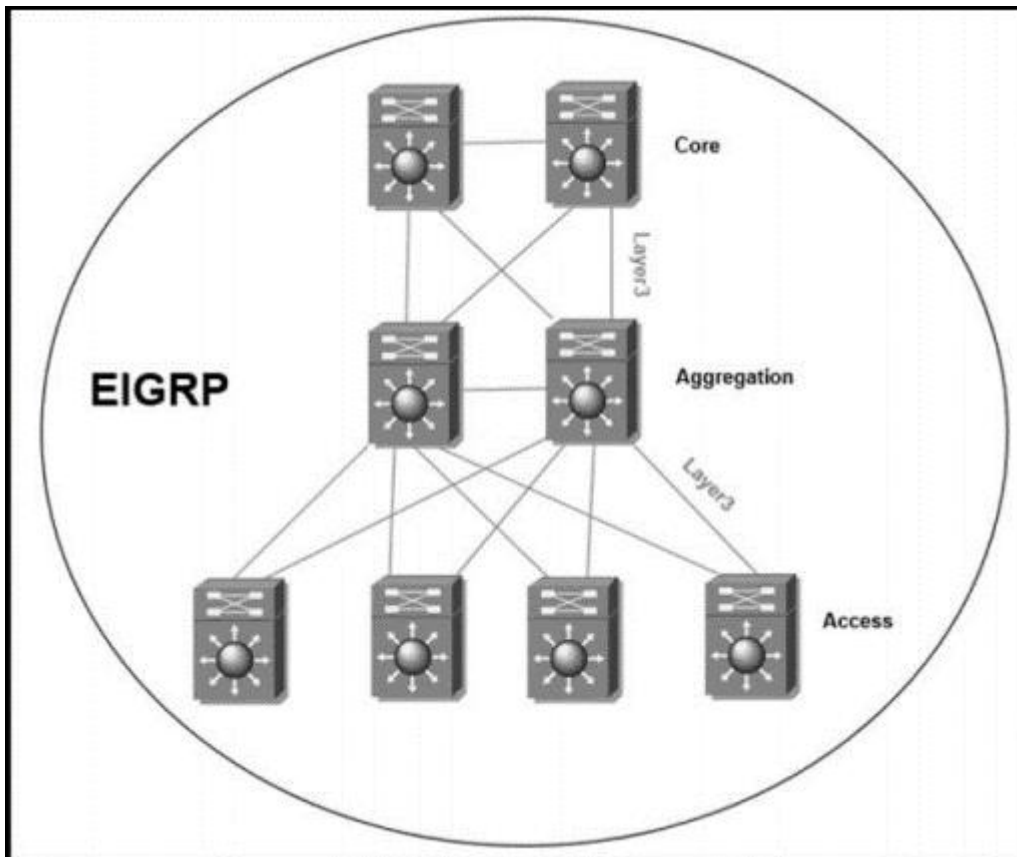
Answer: C

3.Which OSPF area blocks LSA Type 3, 4 and 5, but allows a default summary route?

- A. normal
- B. stub
- C. NSSA
- D. totally stubby

Answer: D

4.Refer to the exhibit.



The full EIGRP routing table is advertised throughout the network. Currently, users experience data loss when any one link in the network fails. An architect optimizes the network to reduce the impact when a link fails.

Which solution should the architect include in the design?

- A. Run BFD on the inter links between EIGRP neighbors.
- B. Summarize the access layer networks from each access layer switch toward the aggregation layer.
- C. Reduce the default EIGRP hello interval and hold time.
- D. Summarize the access layer networks from the aggregation layer toward the core layer.

Answer: A

5. An engineer is working for a large cable TV provider that requires multiple sources streaming video on different channels using multicast with no rendezvous point.

Which multicast protocol meets these requirements?

- A. PIM-SM
- B. PIM-SSM
- C. any-source multicast
- D. BIDIR-PIM

Answer: B

Explanation:

PIM-SSM is suitable for when well-known sources exist within the local PIM domain and for broadcast applications. Also, PIM-SSM eliminates the RPs and shared trees